

Test Report No. F690101/LF-CTSAYGU23-05338

Issued Date : 2023. 07. 13

Page 1 of 4

HYUNDAI SPECIAL STEEL

151 Daesong-ro, Nam-gu
Pohang-si, Gyeongbuk
Korea



The following sample(s) was/were submitted and identified by/on behalf of the client as:-

SGS File No. : AYGU23-05338
Product Name : SNB16
Item No./Part No. : N/A
Received Date : 2023. 07. 03
Test Period : 2023. 07. 03 to 2023. 07. 13
Test Results : For further details, please refer to following page(s)

SGS Korea Co., Ltd.
/ Busan Laboratory



Taehee Kang / Technical Manager

The test results of this test report are only limited to samples and sample names provided by the client and do not guarantee the quality of all products of the client. This test report shall not be used for public relation, advertisement, lawsuit and shall not be used by excerpts from it. This test report can be checked through the <http://rohs.kr.sgs.com/checkreport/main> This test report is not related to KS Q ISO/IEC 17025 and Korea Laboratory Accreditation Scheme.

This document is issued by the Company subject to its General Conditions of Service printed overleaf, available on request or accessible at <http://www.sgs.com/en/terms-and-conditions.aspx> and, for electronic format documents, subject to Terms and Conditions for Electronic Documents at <http://www.sgs.com/en/terms-and-conditions/terms-e-document>. Attention is drawn to the limitation of liability, indemnification and jurisdiction issues defined therein. Any holder of this document is advised that information contained hereon reflects the Company's findings at the time of its intervention only and within the limits of Client's instructions, if any. The Company's sole responsibility is to its Client and this document does not exonerate parties to a transaction from exercising all their rights and obligations under the transaction documents. This document cannot be reproduced except in full, without prior written approval of the Company. Any unauthorized alteration, forgery or falsification of the content or appearance of this document is unlawful and offenders may be prosecuted to the fullest extent of the law. Unless otherwise stated the results shown in this test report refer only to the sample(s).

MQP-708/001-F12 (01)

SGS Korea Co., Ltd.

50, Sinsan-ro 29beon-gil, Saha-gu, Busan, Korea 49432
t +82 (0)51 795 7300 f +82 (0)51 795 7310 <http://www.sgsgroup.kr>



Test Report No. F690101/LF-CTSAYGU23-05338

Issued Date : 2023. 07. 13

Page 2 of 4

Sample No. : AYGU23-05338.001
Sample Description : SNB16
Item No./Part No. : N/A
Materials : N/A

Heavy Metals

Test Items	Unit	Test Method	MDL	Results
Cadmium (Cd)	mg/kg	With reference to IEC 62321-5 : 2013, by ICP-OES	0.5	N.D.
Lead (Pb)	mg/kg	With reference to IEC 62321-5 : 2013, by ICP-OES	5	N.D.
Mercury (Hg)	mg/kg	With reference to IEC 62321-4 : 2013+A1 : 2017, by ICP-OES	2	N.D.
Hexavalent Chromium (Cr VI) *	µg/cm ²	With reference to IEC 62321-7-1 : 2015, by UV-Vis	0.1	N.D.

Flame Retardants-PBBs/PBDEs

Test Items	Unit	Test Method	MDL	Results
Monobromobiphenyl	mg/kg	With reference to IEC 62321-6 : 2015, by GC-MS	5	N.D.
Dibromobiphenyl	mg/kg	With reference to IEC 62321-6 : 2015, by GC-MS	5	N.D.
Tribromobiphenyl	mg/kg	With reference to IEC 62321-6 : 2015, by GC-MS	5	N.D.
Tetrabromobiphenyl	mg/kg	With reference to IEC 62321-6 : 2015, by GC-MS	5	N.D.
Pentabromobiphenyl	mg/kg	With reference to IEC 62321-6 : 2015, by GC-MS	5	N.D.
Hexabromobiphenyl	mg/kg	With reference to IEC 62321-6 : 2015, by GC-MS	5	N.D.
Heptabromobiphenyl	mg/kg	With reference to IEC 62321-6 : 2015, by GC-MS	5	N.D.
Octabromobiphenyl	mg/kg	With reference to IEC 62321-6 : 2015, by GC-MS	5	N.D.
Nonabromobiphenyl	mg/kg	With reference to IEC 62321-6 : 2015, by GC-MS	5	N.D.
Decabromobiphenyl	mg/kg	With reference to IEC 62321-6 : 2015, by GC-MS	5	N.D.
Monobromodiphenyl ether	mg/kg	With reference to IEC 62321-6 : 2015, by GC-MS	5	N.D.
Dibromodiphenyl ether	mg/kg	With reference to IEC 62321-6 : 2015, by GC-MS	5	N.D.
Tribromodiphenyl ether	mg/kg	With reference to IEC 62321-6 : 2015, by GC-MS	5	N.D.
Tetrabromodiphenyl ether	mg/kg	With reference to IEC 62321-6 : 2015, by GC-MS	5	N.D.
Pentabromodiphenyl ether	mg/kg	With reference to IEC 62321-6 : 2015, by GC-MS	5	N.D.
Hexabromodiphenyl ether	mg/kg	With reference to IEC 62321-6 : 2015, by GC-MS	5	N.D.
Heptabromodiphenyl ether	mg/kg	With reference to IEC 62321-6 : 2015, by GC-MS	5	N.D.
Octabromodiphenyl ether	mg/kg	With reference to IEC 62321-6 : 2015, by GC-MS	5	N.D.
Nonabromodiphenyl ether	mg/kg	With reference to IEC 62321-6 : 2015, by GC-MS	5	N.D.
Decabromodiphenyl ether	mg/kg	With reference to IEC 62321-6 : 2015, by GC-MS	5	N.D.

This document is issued by the Company subject to its General Conditions of Service printed overleaf, available on request or accessible at <http://www.sgs.com/en/Terms-and-Conditions.aspx> and, for electronic format documents, subject to Terms and Conditions for Electronic Documents at <https://www.sgs.com/en/terms-and-conditions/terms-e-document>. Attention is drawn to the limitation of liability, indemnification and jurisdiction issues defined therein. Any holder of this document is advised that information contained hereon reflects the Company's findings at the time of its intervention only and within the limits of Client's instructions, if any. The Company's sole responsibility is to its Client and this document does not exonerate parties to a transaction from exercising all their rights and obligations under the transaction documents. This document cannot be reproduced except in full, without prior written approval of the Company. Any unauthorized alteration, forgery or falsification of the content or appearance of this document is unlawful and offenders may be prosecuted to the fullest extent of the law. Unless otherwise stated the results shown in this test report refer only to the sample(s).

MQP-708-001-F12 (01)

SGS Korea Co., Ltd.

50, Sinsan-ro 29beon-gil, Saha-gu, Busan, Korea 49432
t +82 (0)51 795 7300 f +82 (0)51 795 7310 <http://www.sgsgroup.kr>

Member of the SGS Group (Société Générale de Surveillance)

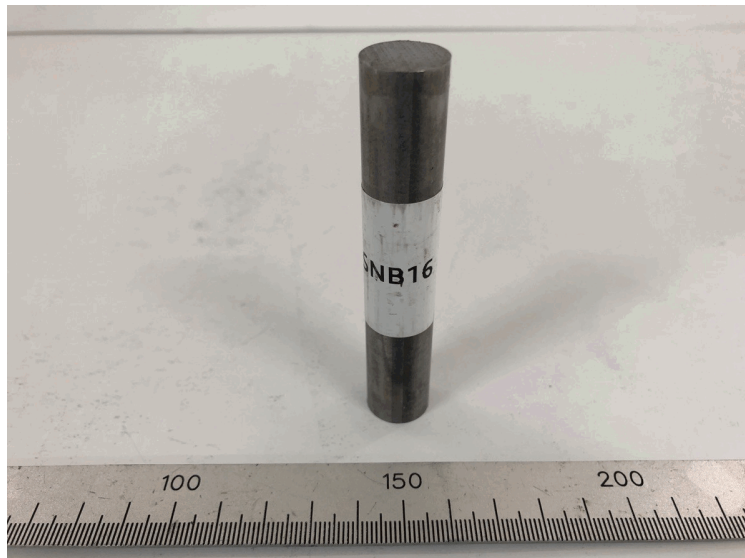
Test Report No. F690101/LF-CTSAYGU23-05338

Issued Date : 2023. 07. 13

Page 3 of 4

- NOTE:
- (1) N.D. = Not detected.(<MDL)
 - (2) mg/kg = ppm
 - (3) µg/kg = ppb
 - (4) MDL = Method Detection Limit
 - (5) - = No regulation
 - (6) Negative = Undetectable / Positive = Detectable
 - (7) ** = Qualitative analysis (No Unit)
 - (8) * = a. The sample is positive for CrVI if the CrVI concentration is greater than 0.13 ug/cm2. The sample coating is considered to contain CrVI.
b. The sample is negative for CrVI if CrVI is n.d. (concentration less than 0.10 ug/cm2). The coating is considered a non-CrVI based coating.
c. The result between 0.10 ug/cm2 and 0.13 ug/cm2 is considered to be inconclusive - unavoidable coating variations may influence the determination.

Picture of Sample as Received:



AYGU23-05338.001

This document is issued by the Company subject to its General Conditions of Service printed overleaf, available on request or accessible at <http://www.sgs.com/en/Terms-and-Conditions.aspx> and, for electronic format documents, subject to Terms and Conditions for Electronic Documents at <https://www.sgs.com/en/terms-and-conditions/terms-e-document>. Attention is drawn to the limitation of liability, indemnification and jurisdiction issues defined therein. Any holder of this document is advised that information contained hereon reflects the Company's findings at the time of its intervention only and within the limits of Client's instructions, if any. The Company's sole responsibility is to its Client and this document does not exonerate parties to a transaction from exercising all their rights and obligations under the transaction documents. This document cannot be reproduced except in full, without prior written approval of the Company. Any unauthorized alteration, forgery or falsification of the content or appearance of this document is unlawful and offenders may be prosecuted to the fullest extent of the law. Unless otherwise stated the results shown in this test report refer only to the sample(s).

MQP-708-001-F12 (01)

SGS Korea Co.,Ltd.

50, Sinsan-ro 29beon-gil, Saha-gu, Busan, Korea 49432
t +82 (0)51 795 7300 f +82 (0)51 795 7310 <http://www.sgsgroup.kr>

Member of the SGS Group (Société Générale de Surveillance)

Testing Flow Chart for RoHS:Cd/Pb/Hg/Cr⁶⁺ /PBBs&PBDEs Testing



The samples were dissolved totally at the acid digestion step of the above flow chart for Cd,Pb,Hg
 Section Chief : Taehee Kang

*** End of Report ***